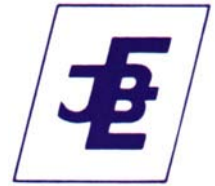


H. HERMANN EHLERS GMBH

Fördern - Messen - Regeln - Dosieren - Verdichten
Ingenieurbüro - Werksvertretungen



Treibschieberzaehler
Typ LBM 1000 - LBM 3000

P.D. Meters
Type LBM 1000 - LBM 3000



Description

The P.D. meter LBM series are positive displacement type, double case and the available size are 8" - 10". By virtue of excellent design and development over a number of years, they are noted for their exceptional accuracy over a very wide range, and in service, this accuracy is maintained over a long period of use.

Simplicity is a noteworthy feature: the rotor and rotor vanes, constantly immersed in liquid, are the only moving parts.

The double case P.D. meters are suitable for a wide range of pressure till 10.000 KPa (100 bar) even maintaining the high measuring precision and manufacturing simplicity of the single case meters.

Moreover they permit the disassembling of the measuring chamber without removing the external case from the line.

Vega electronic counter permits reading and setting of the parameters necessary to perform the following functions: totalization, presetting, temperature compensation at 15°C and the linearization of the meter's error curve. It's possible the remote transmission of data.

For further informations consult "Electronic counter Vega" leaflet.

In alternative the P.D. meter can be supplied with Veeder Root mechanical counter, with 5 large-figure drum, that can be reset by means of a lever.

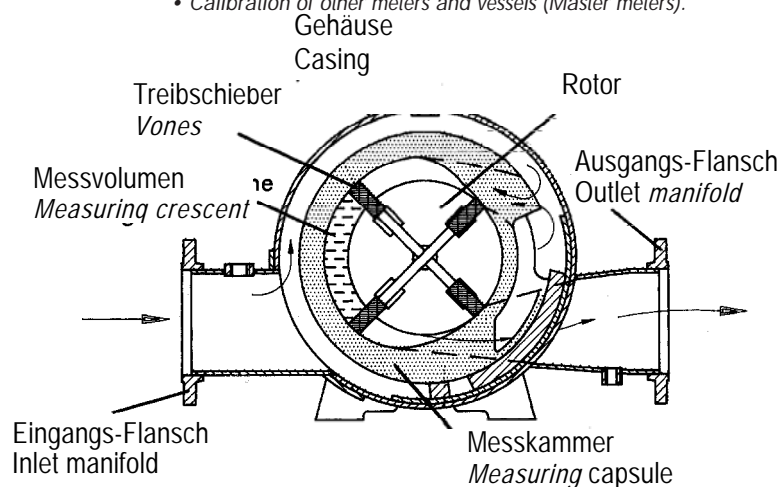
A smaller 8 figure drum gives the total quantity and this totalizer cannot be reset. The reading can be in m³ or gallons.

Service and maintenance of LBM series P.D. meters are facilitated by the use of many parts that are identical and interchangeable in the two models.

LBM 1000 has only one measuring chamber, LBM 3000 two.

Uses

- Loading of tanks, tank wagons, and barges.
- Transfer of petrochemical products in refineries depots, and pipelines.
- Calibration of other meters and vessels (Master meters).



High precision

During their movement the vanes are driven by the internal surface of the body. This means that the self-lubricating vanes are in continuous contact with the internal surface of the body, avoiding product leakage.

The calibrating mechanism permits a micrometric adjustment and easy calibration by means of a special key.

It isn't necessary to substitute gears.

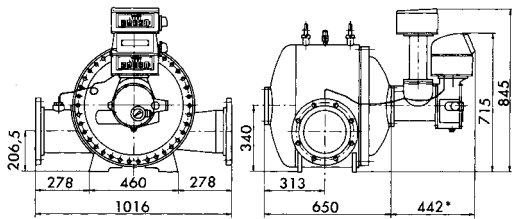
When the electronic counter Vega is used, calibration is digital and calibration mechanism is substituted by a 90° driving gear.

Strainers and Strainers-air separators

For an accurate metering the liquid has to be correctly filtered and deaerated. Suggested filtration: 100 mesh for gasoline, kerosene and water, 60 mesh for diesel oil and 40 mesh for viscous products.

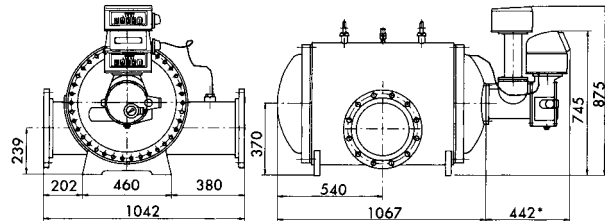
Zaehler mit mech. Zaehlwerk
P.D. meter with mechanical counter

LBM 1000
8"



* ohne Kompensation, Mass 323
 Without compensator dimension is 323

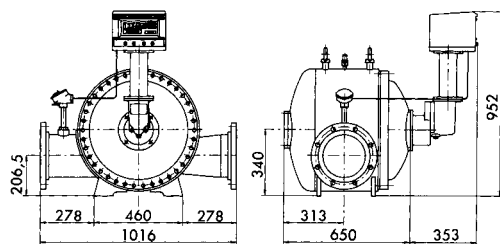
LBM 3000
10"



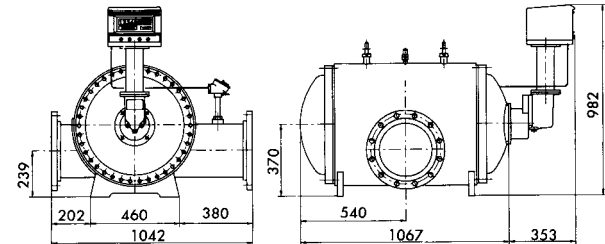
* ohne Kompensation, Mass 323
 Without compensator dimension is 323

Zaehler mit elektronischem Zaehlwerk VEGA
P.D. meter with electronic counter

LBM 1000
8"



LBM 1000
8"



	Zaehler Meter LBM 1000	Zaehler Meter LBM 3000	Zaehlwerk Counter	Vorwahl Preset	Drucker Ticket printer	Vega-Zaehlwerk Counter Vega
Gewicht/Weight Kg	430	795	6	5	5	15

technische Daten

	LBM 1000	LBM 3000
Duchfl I/min	7850*	15700*
	*bei Viscositaet 3÷10 cSt.	
Ablesung	m ³	
Maximaler Arbeitsdruck	ANSI 150 RF: 1930 KPa ANSI 300 RF: 3200 KPa Bei Druucken ueber 3200 Kpa fragen Sie uns bitte an.	
Temperatur	min. -10°C max. +100°C Hoehere Temp. auf Anfrage	

Technical characteristics

	LBM 1000	LBM 3000
Flow rate I/min	7850*	15700*
	*For products with viscosity of 3÷10 cSt.	
Counter reading	m ³	
Maximum Working Pressure	ANSI 150 RF: 1930 KPa ANSI 300 RF: 3200 KPa For pressure higher than 3200 KPa consult factory.	
Temperature	min. -10°C max. +100° Others temperature range on request	

Material

Gehäuse aussen	C-Stahl
Hehaeuse innen	Grauguss- Meehanit
Rotor	Grauguss- Meehanit
Treibschieber	Aluminium und Rilsan
Dichtungen	Viton
Lager	Edelstahl

Materials of construction

External body	Carbon steel
Internal body	Cast iron Meehanite
Rotor	Cast iron Meehanite
Vaness	Aluminium and rilsan
Gaskets	Viton
Bearings	Stainless steel

Zubehoer

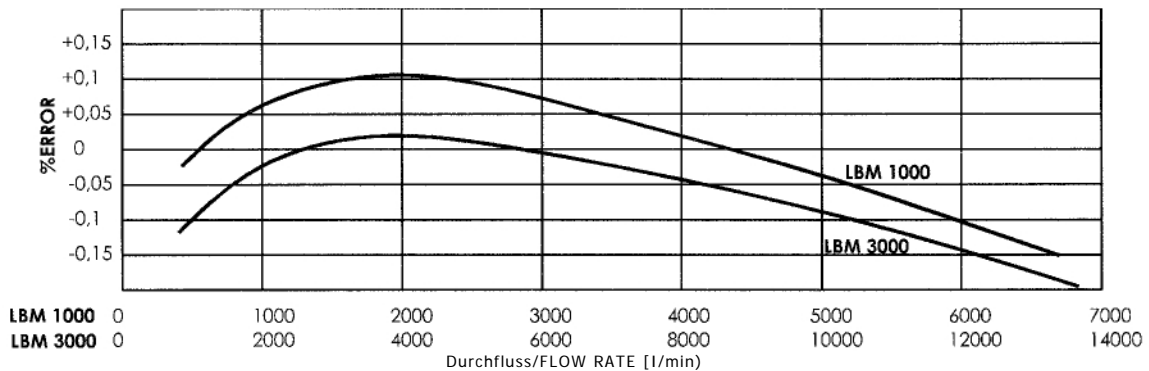
Automatik Ventil	8", 10" ANSI 150 - Gehaeuse in C-Stahl - Membran in NBR - Funktion als 2 stufiges Abschaltventil od. Durchflussbegrenzung - Non return
Impulsgeber	Model 1264 EEx-d Gehaeuse oder encoder eigensicher TypüB45 als Naeheringsschalter- Impulswerte: 1, 5, 50, 100je Liter, andere auf Anfrage.
Automatische Temperatur Kompensation	mit mechanischer Mengenumwertung oder mit elektronischem Zaehlwerk Typ VEGA.
Unit drum	erhoeht die Ablesegenauigkeit bei mechanischem Zaehlwerk (als Master-Meter)

Accessories

Automatic valve	8", 10" ANSI 150 - Body in carbon carbon steel - Diaphragm in NBR - Two Stages shut-off - Flow limiting - Non return
Pulser emitter	1264 model in EEx-d housing with proximity switch or encoder - Intrinsically safe type 345 - Pulse output: 1, 5, 50, 100 per litre - Other pulses output on request
Automatic temperature compensator	Mechanical selling α coefficient or electronic (Vega counter)
Unit drum	Increases accuracy in the counter's reading (for Master Meters)

Messgenauigkeit

Typical accuracy curves



Druckverlust

Pressure drop

